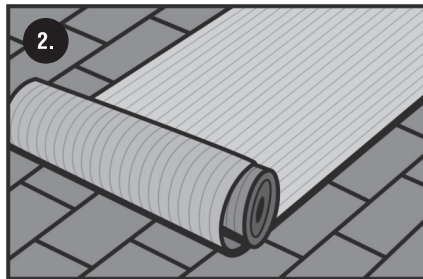
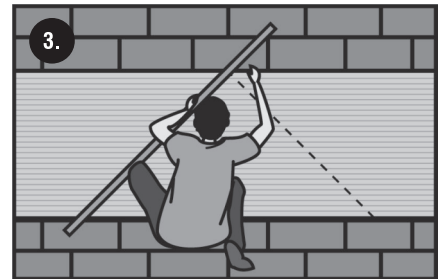




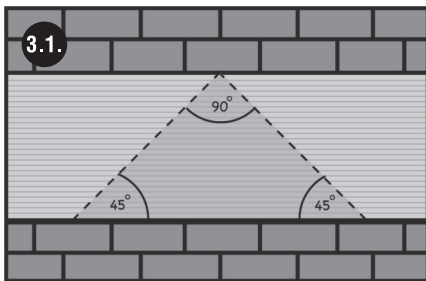
1. Ausmessen
Measuring



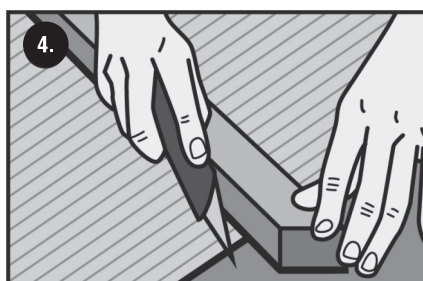
2. Matte mit Rückseite nach oben auslegen
Lay out the mat with the reverse side facing upwards



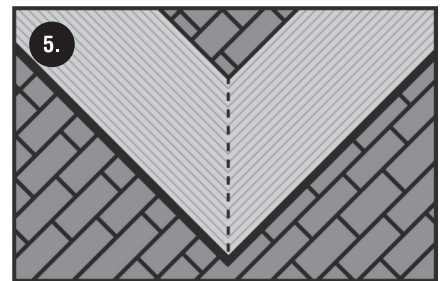
3. Matte auf Rückseite markieren
Marking on the backing of the mat



3.1. Markierungsschema
Marking scheme



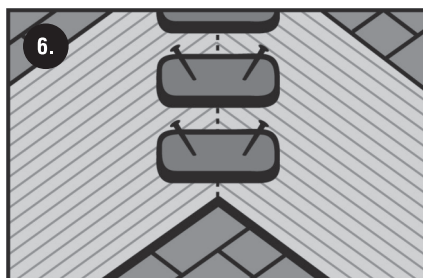
4. Matte zuschneiden
Cutting the mat to size



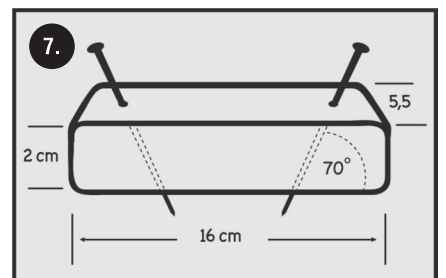
5. Schnittkante auf Stoß mit Kaltschweißpaste verkleben
Glue the cut edges together with cold welding paste



5.1. Detailansicht Nahtversiegelung
Detailed view of seam sealing



6. Verklebte Matte 30 min. mit Fixierklötzen zusammenpressen
Press the glue mat together for 30 min. with fixing blocks



7. Skizze für DIY-Fixier-Klotz Maße
Scheme for DIY-fixing-block dimensions

